

GILSON MIXERS

**2 CU.FT.
PEDESTAL MIXER
MODEL: 59005**

OPERATOR'S GUIDE & PARTS MANUAL



GILSON MIXERS

BY



4343 Easton Road · St. Joseph, MO 64503

816-233-4840 · 800-253-3676

Fax 816-233-4624 · 888-253-3676

E-Mail: cleform@ccp.com

Web Address: www.cleform.com

TO THE OWNER

This owner’s manual has been prepared to provide the information needed to operate and maintain your mixer with greatest satisfaction. Through proper care and operation as explained in this manual you will receive long and efficient service and trouble free operation.

Be sure every operator of this mixer reads this owner’s manual before operating the mixer.

Information regarding operation and maintenance of the engine/motor can be found in a separate engine/motor manual supplied with this mixer, if the mixer is furnished with an engine/motor. The manual prepared by the engine/motor manufacturer gives you all the information necessary regarding engine/motor operation or service. Contact the nearest engine repair facility or the engine/motor manufacturer.

TABLE OF CONTENTS

1. Safety Precautions	2
2. Assembly	4
3. Operation	
Getting Ready For Mixing	5
Loading The Mixer	6
Unloading The Mixer	6
Cleaning The Mixer	6
Extension Cords-Electric Motor	7
4. Lubrication And Storage	6-7
5. Concrete Mixer Parts	8
Parts List	9

IMPORTANT: IF SAFETY OR STANDARD Decals are missing, illegible, or damaged, they should be replaced. See “Replacement Decals” section

SAFETY PRECAUTIONS

1. Read all operating and maintenance instructions before operating or servicing mixer. Test run empty prior to actual use.
2. A mixer is only as safe as its operator. Give complete and undivided attention to the operation of the mixer.
3. Know how to stop the mixer and the motor/engine instantly.
4. Always have all guards and safety devices attached and in place before operating mixer.
5. Keep inexperienced and unauthorized people away from the mixer at all times.
6. Never leave the mixer unattended when it is running.
7. Shut off engine or disconnect the electric motor before making any adjustments or putting hands or tools in the drum. **NEVER REACH INTO DRUM WHILE MIXER IS RUNNING.**
8. Do not overfill-do not exceed the mixer's capacity.
9. Do not re-fuel the engine when it is hot or running or while you are smoking. Avoid spilling fuel.
10. Block mixer wheels or legs when operating on a slope so that mixer is level and will not move.
11. Use safety chains when highway towing.
12. Lower the frame stabilizer, if mixer is equipped, and lock them in place before operating mixer. If the ground is soft, place boards under the stabilizers and wheels.
13. Keep mixer in good operating condition. Loose or damaged parts are dangerous. A clean mixer is a safer mixer.
14. Avoid loose clothing that could get caught in moving parts or on control levers. **KEEP HANDS AND FEET AWAY FROM MOVING PARTS.**
15. Never change or fill unit prior to starting as the overload initially encountered could damage the motor/engine.

SUGGESTED CONCRETE MIXES*

USE OF CONCRETE	U.S. GAL. OF WATER PER SACK OF CEMENT AVERAGE SAND MOIST	SAND & GRAVEL PER SACK OF CEMENT		LARGEST SIZE OF GRAVEL
		SAND CU.FT.	GRAVEL CU. FT.	
Most farm construction such as floors, steps, basement walls, yards, pavement, silos, grain bins and water tanks.	5	2 1/4	3	1 1/2 in.
Concrete in thick sections and not subject to freezing. Thick footings, thick foundations, retaining walls, engine bases.	5 1/2	2 3/4	4	1 1/2 in.
Thin reinforced concrete such as milk cooling tanks, fence post, thin floors, most uses where concrete is 2 to 4 inches thick.	5	2 1/4	2 1/2	3/4 in.
Very thin concrete such as top course of 2-course floors and pavements, concrete lawn furniture, most uses where concrete is 1 to 2 inches thick	4	1 3/4	2 1/4	3/8 in.

*These are trial mixes for average conditions. It is particularly important to use no more water per sack of cement than shown in the table. If sand is very wet, decrease amount of water used 1 gal. per sack of cement. If sand is dust dry, increase amount of water 1/2 gal. per sack of cement. Change proportions of sand and gravel slightly if necessary to get workable mix.

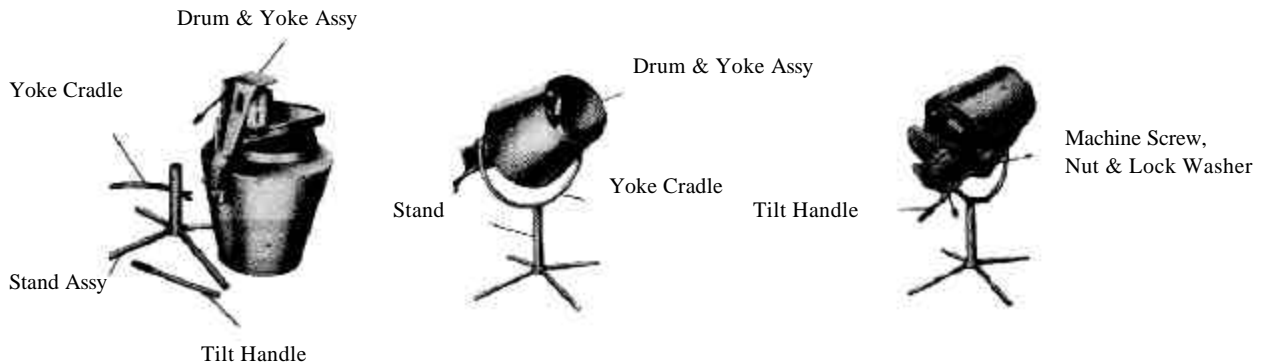
ASSEMBLY

This mixer is shipped partially disassembled for crating. The parts contained in the carton are shown in Fig. 1

1. Remove the mixer from the crate and assemble the yoke cradle into the stand. (Fig. 2)
2. Set the drum and yoke assembly into the ears on the yoke cradle as shown in Fig. 2
3. Attach the tilt handle to handle rod on yoke assembly with the included $\frac{1}{4}$ 20 x 1-1/2 round head machine screw, $\frac{1}{4}$ 20 hex nut and $\frac{1}{4}$ lockwasher. (Fig. 3)

Your mixer is now completely assembled. Be sure you read and fully understand the remainder of this manual before beginning to mix concrete.

NOTE: To disassemble the mixer for transport; reverse the above procedure.



INITIAL SERVICING

1. Be sure all motor instructions are followed as outlined on the motor tag. Read through for all operations, adjustment and maintenance instructions.
2. Although the mixer was lubricated at the factory, now is a perfect time to become familiar with points requiring regular service. Refer to the "LUBRICATION" section.
3. All nuts and cap screws should be checked and tightened during the first two (2) hours of use. Periodic checks should be made thereafter.

OPERATIONS

GETTING READY FOR MIXING

Lay out forms for your concrete floor, patio, driveway, sidewalk, etc.

Before you can begin mixing concrete, you must know how much material you'll need. This mixer was designed to mix enough concrete to fill an area approximately 2 feet wide by 3 feet long and 4 inches deep for each batch mixed.

For each average batch of concrete mixed you will need these approximate quantities: 8 shovels of coarse aggregate (gravel), 6 ½shovels of sand, 2 ½shovels of cement and a 13 quart pail of water. The quantity of water required depends upon the wetness of the sand. For a shovel use a standard garden spade. **IMPORTANT!** These quantities are approximate and may vary to obtain a workable mix. The quantities are based on average applications.

The following equation gives you a rough estimate of how much material you will need for each bag of cement and how much concrete this mixture will produce. For thinner slabs of concrete use smaller size and less aggregate (gravel).

1 Bag Cement (94#) + 2 ¼Cu. Ft. Sand + 3 ¼Cu. Ft. Coarse Aggregate (Gravel) =
5 ¼Cu. Ft. of Concrete (4 Ft. x 4 Ft. x 4 In. Thick).

LOADING THE MIXER

Start the mixer. Refer to motor/engine Instructions. After drum has started rotating, pour about half of the pail of water into the drum. **NOTE: The drum may leak slightly when first used. This will stop after a few batches.**

Add all aggregate (gravel) and 2 ½ full shovels of cement. Now add the remaining sand.

UNLOADING THE MIXER

Allow the entire mixture to mix for one (1) full minute. **Do not stop mixer from rotating.** Hold the tilt handle and dump concrete to side by tilting handle in the direction required.

CLEANING THE MIXER

After each run of concrete has been poured, do the following:

With the drum rotating, spray water into drum permitting the water to run down the inside and outside of drum. Add one full shovel of coarse aggregate and permit this mixture to scour the inside of drum for about two (2) minutes.

This practice will help keep the drum clean, which is essential in obtaining the best mixing results. **Never permit concrete to harden on either the inside or outside of the drum.**

LUBRICATION

Engine/Motor – Refer to engine/motor operating instructions for all maintenance and lubrication instructions and requirements.

Drum Bottom – Refer to Fig. 4. Clean off grease fitting before greasing. Use a pressure type grease gun. Grease until grease comes out of bearing. Lubricate every day before using.

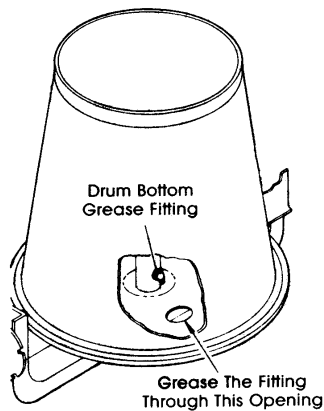


FIG. 4

Pinion Shaft Bearing – Located on underside of yoke. Clean off grease fitting before greasing. Use a pressure type grease gun. Grease until grease comes out of bearing. Lubricate every day before using.

EXTENSION CORDS – ELEC. MOTOR

The following size extension cords should be used for this mixer: length of cord, up to 100 ft. – 14 gage wire; up to 200 ft. – 12 gage wire; up to 300 ft. – 10 gage wire; up to 400 ft. – 8 gage wire.

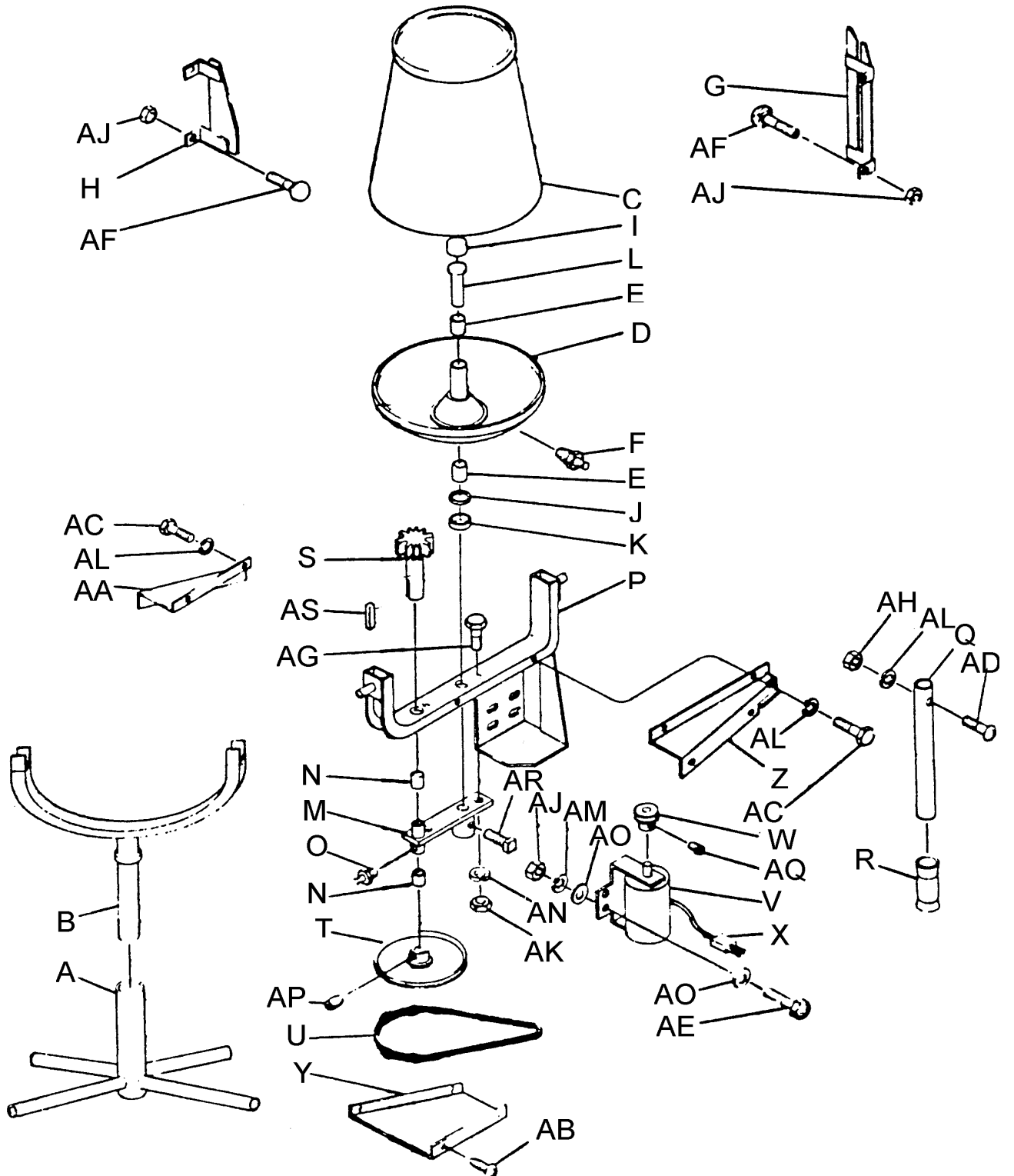
Note: Extension cord must be a 3 wire power cord and 3 wire power plug that is approved for outdoor use. When connecting power cord, always connect cord to motor first and then plug other end into a grounded receptacle. When disconnecting power cord, always unplug the end in the grounded receptacle first.

STORAGE

For short term storage, clean the mixer and store in a dry place. If the mixer is not to be used for an extended period of time, service mixer completely and store it in a dry place.

1. Refer to motor/engine instructions for storage instruction.
2. Cover exposed metal surfaces with a thin coat of S.A.E. #30 wt. oil.
3. Lubricate per instructions under “LUBRICATION” section.

MIXER PARTS



Concrete Mixer Parts List

Ref. Letter	Part No.	Description	Qty.
A	5899	Frame Assembly	1
B	5898	Yoke Cradle Assembly	1
C	19429	Drum Top Assembly	1
D	29407	Drum Bottom Assembly	1
E	5269	Drum Shaft Bushing	2
F	5904	Grease Fitting	1
G	19217	Cutting Blade Assembly	2
H	19218	Shovel Blade Assembly	2
I	19866	Cap-Drum Shaft	1
J	5450	Washer-Light	As Req'd
K	5452	Washer-Heavy	As Req'd
L	19914	Drum Shaft Assembly	1
M	29241	Drum Shaft & Pinion Bearing	1
N	1024	Yoke Bushing	2
O	1102	Grease Fitting	1
P	207508	Yoke Assembly	1
Q	5897	Handle	1
R	1183	Handle Grip	1
S	5365	Pinion Shaft with Pinion	1
T	5415	Pulley	1
U	19489	V-belt	1
V	19243	Motor & Mount	1
W	5284	Pulley-Motor	1
X	5062	Cord Set	1
Y	19370	Guard Cover	1
Z	19368	Motor Side Guard	1
AA	19369	Pulley Side Guard	1
AB	29065	Self Tapping Screw	4
AC	*70086	Cap Screw, Hex Hd. 1/4-20 x 1/2	4
AD	*70914	Machine Screw, Round Hd. 1/4-20 x 1-1/2	1
AE	*70139	Cap Screw, Hex Hd. 5/16-18 x 3/4	4
AF	*70448	Bolt, Carriage 3/8-16 x 3/4	8
AG	*70340	Cap Screw, Hex Hd. 1/2-13 x 1 1/2	2
AH	*70543	Nut, Hex 1/4-20	1
AI	*70548	Nut, Hex 5/16-18	4
AJ	*70552	Nut, Hex 3/8-16	8
AK	*70562	Nut, Hex 1/2-13	2
AL	*70642	Washer, Spring Lock 1/4	5
AM	*70645	Washer, Spring Lock 5/16	4
AN	*70654	Washer, Spring Lock 1/2	2
AO	*70700	Washer, Flat 5/16	8
AP	*70498	Set Screw, Socket Hd. 5/16-18 x 5/16 H.T.	1
AQ	*70500	Set Screw, Socket Hd. 5/16-18 x 1/2 H.T.	1
AR	*70073	Set Screw, Square Hd. 1/2-13 x 1 H.T.	1
AS	*70797	Key, Square 3/16 x 1 1/4	1

*Common hardware may be purchased locally

MIXERS ONE-YEAR WARRANTY

This product is warranted to the original purchaser only, to be free of defects in material and workmanship under normal use, for one year from purchase date. Cleform Tool Corp. shall without charge for parts and labor, repair or replace such parts which are found to be defective. All transportation charges for replacement parts must be borne by the purchaser.

For warranty service, the product must be delivered, with proof of purchase date, to the dealer of original purchase, or any factory authorized service dealer. The delivery of the unit must be made no later than 30 days after the expiration of the warranty period.

If difficulty is encountered in having warranty work performed, contact the factory Service Department:

**CLEFORM TOOL CORP.
4343 EASTON ROAD
ST. JOSEPH, MO 64503
800-253-3676 PHONE
888-253-3676 FAX**

Exclusion from this warranty:

1. The following items are not covered under the CLEFORM TOOL CORP. One Year Warranty, and are warranted by their respective manufacturer.
 - a) Engines, including starters, generators, alternators and gear reducers.
 - b) Enclosed gear transmissions.(Note: A copy of the warranty and service contact information for the above items is furnished with the individual product).
2. All consequential damages, including pickup and delivery of the unit, communication, mileage charges and/or rental of a replacement unit during repairs are not covered under this warranty, nor is any loss of income and/or other loss resulting from the failure of the product to function due to a warranty defect.
3. This warranty will not apply when the product becomes inoperative due to misuse, normal wear, neglect, improper maintenance, accident or freight damage; has not been operated and maintained in accordance with the instructions furnished in the Operator's Manual; or has been altered or modified without approval from the factory Service Department.
4. No parts or products are to be returned to the factory without prior written approval from the factory.

ALL IMPLIED WARRANTIES, INCLUDING THOSE OF MERCHANTABILITY AND FITNESS FOR A PARTICULAR PURPOSE, ARE LIMITED TO ONE YEAR FROM DATE OF PURCHASE BY THE ORIGINAL RETAIL CUSTOMER AND TO THE EXTENT PERMITTED BY LAW ANY AND ALL IMPLIED WARRANTIES ARE EXCLUDED AND DISCLAIMED AFTER THE EXPIRATION OF SUCH PERIOD.

Some states do not allow limitations on how long an implied warranty lasts, or the exclusion or limitations of incidental or consequential damages, so the above limitations or exclusions may not apply to you.

This warranty gives you specific legal rights, and you may also have other rights, which vary from state to state.

HOW TO OBTAIN PARTS AND SERVICE INFORMATION

For parts and service information, contact either your local dealer or the Cleform Tool Corp. factory:

CLEFORM TOOL CORP.
4343 EASTON ROAD
ST. JOSEPH, MO 64503
800-253-3676 PHONE
888-253-3676 FAX

HOW TO ORDER PARTS

When ordering parts be sure to indicate the following information:

- **Name of each part**
- **Complete part number**
- **Quantity of each part**
- **Model Name** (Include all letters and numbers)
- **Serial Number** (Include all letters and numbers)