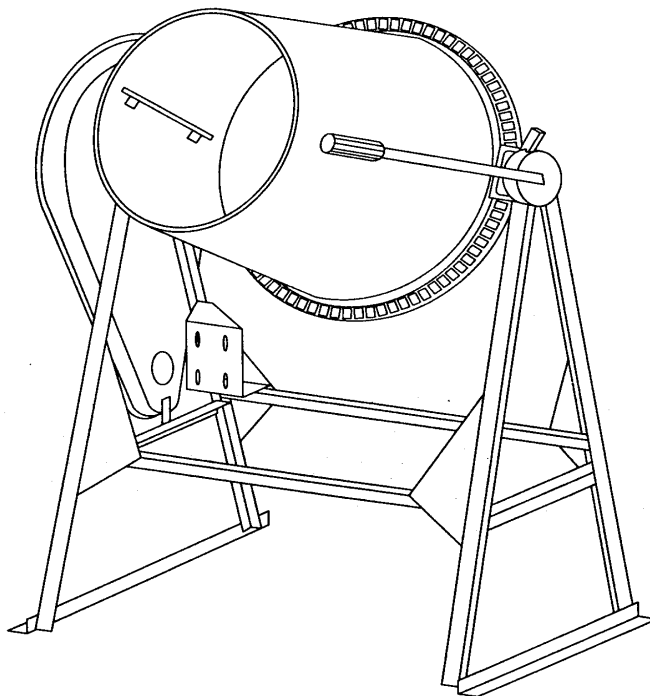


# GILSON MIXERS

**5 1/2 CU. FT.  
CONCRETE MIXER  
MODEL: 59012A**

## **OPERATOR'S GUIDE & PARTS MANUAL**



**GILSON MIXERS  
BY**



4343 Easton Road · St. Joseph, MO 64503  
816-233-4840 · 800-253-3676  
Fax 816-233-4624 · 888-253-3676  
E-Mail: [cleform@ccp.com](mailto:cleform@ccp.com)  
Web Address: [www.cleform.com](http://www.cleform.com)

**INTRODUCTION**

This operator's manual has been prepared to provide the information you need to correctly operate and maintain your unit. Read it carefully and keep it for future reference. Should you ever need repair parts or service, contact your authorized parts and service dealer.

Be sure safety precautions are observed. Read and Follow all safety and operating instructions in this Operator's manual.

The replacement of any part on this product by other than the manufacturer's authorized replacement part may adversely affect the performance, durability or safety of this product.

The manufacturer reserves the right to make changes on, or add improvements to its product at any time without prior notice or obligation. The manufacturer also reserves the right to decide, upon its discretion and at any time, to discontinue a product.

## **TABLE OF CONTENTS**

|                                |     |
|--------------------------------|-----|
| 1. Safety Precautions .....    | 2-3 |
| 2. Operation                   |     |
| Getting Ready For Mixing ..... | 3-4 |
| Loading The Mixer .....        | 4   |
| Unloading The Mixer .....      | 4   |
| Cleaning The Mixer .....       | 4   |
| 3. Lubrication.....            | 4   |
| 4. Replacement Decals          |     |
| Safety .....                   | 6   |
| Standard .....                 | 6   |
| 5. Concrete Mixer Parts .....  | 7   |
| Parts List .....               | 8   |

**IMPORTANT:** IF SAFETY OR STANDARD Decals are missing, illegible, or damaged, they should be replaced. See "Replacement Decals" section

# SAFETY INSTRUCTIONS

## TO THE OWNER:

This owner's manual provides the information needed to operate and maintain this Gilson mixer. Carefully read and follow all safety and operating instructions in this manual. Also, be sure every operator of this mixer reads this manual before operating the mixer.

The replacement of any part on this mixer by other than the manufacturer's authorized replacement part may adversely affect the performance, durability or safety of the product.

The manufacturer reserves the right to make changes on, or add improvements to its product at any time without prior notice or obligation. The manufacturer reserves the right to decide, upon its sole discretion and at any time, to discontinue a product.

Information regarding operation and maintenance of the engine can be found in a separate engine manual supplied with this mixer if the mixer is supplied with an engine. The engine manual provides all the information required regarding engine adjustments, operation and maintenance. Should any questions arise concerning engine operation or service, contact the nearest engine repair facility or the engine manufacturer.



## SAFETY PRECAUTIONS:

This is the industry's safety alert symbol. This symbol calls attention to items or operations that could be dangerous. This symbol can be found throughout this manual and on safety decals on the mixer. Read these messages carefully.

**THE FOLLOWING PRECAUTIONS ARE SUGGESTED TO HELP PREVENT ACCIDENTS. READ AND PRACTICE THE FOLLOWING PRECAUTIONS BEFORE OPERATING THIS EQUIPMENT. ONLY THOSE WHO ARE RESPONSIBLE AND HAVE BEEN PROPERLY INSTRUCTED SHOULD OPERATE EQUIPMENT.**

1. Read all operating and maintenance instructions before operating or servicing mixer. Test run empty prior to actual use.
2. A mixer is only as safe as its operator. Give complete and undivided attention to the operation of the mixer.
3. Know how to stop the mixer and the engine instantly.
4. Always have all guards and safety devices attached and in place before operating mixer.
5. Keep inexperienced and unauthorized people away from the mixer at all times.
6. Never leave the mixer unattended while it is running.

7. Shut off engine or disconnect the electric motor before making any adjustments or putting hands or tools in the drum. **NEVER REACH INTO THE DRUM OR PLACE TOOLS INTO THE DRUM WHILE THE MIXER IS RUNNING.**
8. Use a grounded three-**wire** plug in for all electric motors or electric starters.
9. Do not overfill the drum. Do not exceed the mixer's rated capacity.
10. Do not smoke while refueling the engine. Shut off the engine and allow it to cool before refueling. Do not spill fuel.
11. Block mixer wheels when mixing.
12. Use safety chains while towing mixer.
13. Keep the mixer in good operating condition. Loose or damaged parts are dangerous.
14. Avoid loose clothing that could get caught in moving parts or on control levers. **KEEP HANDS AND FEET AWAY FROM MOVING PARTS.**
15. Do not add material to the drum while stopped. Start the drum before adding material.
16. Keep all warning, caution and safety instruction labels in good condition. Replace missing, damaged or illegible labels.

#### **TOWING & SAFETY CHAINS:**

For mixers equipped with towing kits, during transport, slide the tow pole out as far as possible and insert the locking pin. When operating the mixer, slide the tow pole in and lock in place.

Make sure drum is locked in position.

Cross the safety chains under the tow pole and fasten them to the tow vehicle.

#### **MOTOR PULLEY INSTALLATION:**

The mixer drum should turn between 22 and 25 revolutions per minute for best mixing action.

If using a 1725-1800 RPM electric motor, install a 2" diameter "A" section pulley on the motor shaft.

If using a 6 to 1 speed reduction 3 HP gasoline motor, install a 6-1/4" diameter "A" section pulley on the motor shaft.

#### **PRIOR TO START UP:**

1. Examine the mixer carefully to make sure there was no damage during shipment or since the last use. Report any damaged immediately to the transportation company. Repair any damage before using the mixer.
2. Check the engine oil. Fill as required. Refer to the engine manual for oil specifications.
3. Fill the fuel tank with fresh, clean fuel. Refer to the engine manual for fuel specifications.
4. Lubricate mixer per instruction.

#### **MIXER INSTRUCTIONS:**

**NOTE: The drum may leak slightly when first used. This will stop after a few batches.**

For best results, charge drum as follows:

1. Start the drum rotating.
2. Add about half the required water.

3. Add cement and one shovel full of coarse aggregate. The coarse aggregate will break up any lumps in the cement.
4. Add remaining water and aggregate: crushed stone, pit-run gravel or sand.
5. Mix batch for approximately one minute.

**UNLOADING THE MIXER:**

Allow the batch to mix for at least one full minute. **Do not stop the drum from rotating.** Hold the tilt lever and unlock the stop lever. Dump concrete to either side by moving the tilt handle in the desired direction. Before reloading the mixer, slowly pour a pail of water over the lip of the drum. Allow the water to rinse the drum and then dump the water. The mixer is now ready for another batch. (See figure 1)

**CLEANING THE MIXER:**

When finished mixing concrete, clean the mixer thoroughly. Before stopping the drum, spray water into the drum, allowing water to run down the inside and outside of the drum.

Add one shovel full of coarse aggregate and mix for at least 2 minutes. This will scour the drum. Discharge this mix and rinse the drum.

**Never allow concrete to harden** on either the inside or outside of the mixer.

**LUBRICATION:**

Use lithium based grade 2 multi-purpose grease or SAE 30 weight oil as specified. Lubricate the mixer before each use.

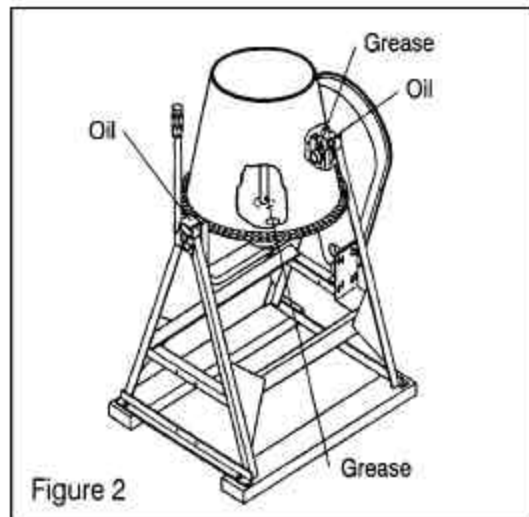
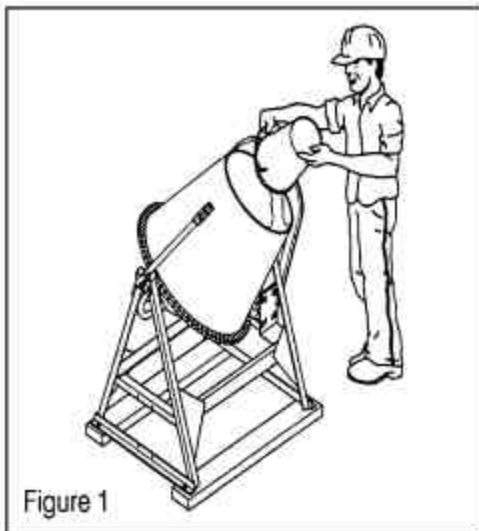
**Grease:**

There are 2 grease fittings. One grease fitting is in the drive side of the drum yoke and lubricates the drive pinion shaft. (See figure 2)

The other grease fitting lubricates the drum shaft bushings. Access the fitting through hole in the bottom of the drum. (See figure 2)

**Oil:**

Oil the Yoke pivot mechanism at the frame. (See figure 2)



**CONCRETE PROPORTIONS:**

The quality of a batch of concrete is related to the quality of the cement paste. The quality of the cement paste is related to the amount of water mixed with the cement. For a given amount of cement, as the amount of water is reduced, the strength of the paste increases, resulting in stronger more durable concrete.

Table 1 shows proportions by weight to make 1 cubic foot (0.028 cubic meters) of concrete. Table 2 shows proportions by volume. Note that one bag of cement is one cubic foot (0.028 cubic meters) and weighs 94 pounds (42.6 kilograms). A Canadian bag of cement weighs 88 pounds (40 kilograms).

Note that these proportions are only a guide and will need to be adjusted to account for actual aggregate sizes and amount of moisture in the sand and aggregate.

Table 1. Proportions by Weight to Make 1 Cu. Ft. of Concrete

| Maximum-size course aggregate in. | Air-entrained concrete |         |                     |          | Concrete without air |         |                     |          |
|-----------------------------------|------------------------|---------|---------------------|----------|----------------------|---------|---------------------|----------|
|                                   | Cement lb              | Sand lb | Course aggregate lb | Water lb | Cement lb            | Sand lb | Course aggregate lb | Water lb |
| 3/8                               | 29                     | 53      | 46                  | 10       | 29                   | 59      | 46                  | 11       |
| 1/2                               | 27                     | 46      | 55                  | 10       | 27                   | 53      | 55                  | 11       |
| 3/4                               | 25                     | 42      | 65                  | 10       | 25                   | 47      | 65                  | 10       |
| 1                                 | 24                     | 39      | 70                  | 9        | 24                   | 45      | 70                  | 10       |
| 1 1/2                             | 23                     | 38      | 75                  | 9        | 23                   | 43      | 75                  | 9        |

\*If crushed stone is used, decrease coarse aggregate by 3 lbs and increase sand by 3 lbs.

Table 2. Proportions by Volume\*

| Maximum-size course aggregate in. | Air-entrained concrete |         |                     |          | Concrete without air |         |                     |          |
|-----------------------------------|------------------------|---------|---------------------|----------|----------------------|---------|---------------------|----------|
|                                   | Cement lb              | Sand lb | Course aggregate lb | Water lb | Cement lb            | Sand lb | Course aggregate lb | Water lb |
| 3/8                               | 1                      | 2 1/4   | 1 1/2               | 1/2      | 1                    | 2 1/2   | 1 1/2               | 1/2      |
| 1/2                               | 1                      | 2 1/4   | 2                   | 1/2      | 1                    | 2 1/2   | 2                   | 1/2      |
| 3/4                               | 1                      | 2 1/4   | 2 1/2               | 1/2      | 1                    | 2 1/2   | 2 1/2               | 1/2      |
| 1                                 | 1                      | 2 1/4   | 2 3/4               | 1/2      | 1                    | 2 1/2   | 2 3/4               | 1/2      |
| 1 1/2                             | 1                      | 2 1/4   | 3                   | 1/2      | 1                    | 2 1/2   | 3                   | 1/2      |

\*The combined volume is approximately 2/3 of the sum of the original bulk volumes.

# REPLACEMENT DECALS

#217728: Decal, Safety Instructions

## SAFETY AND OPERATING INSTRUCTIONS

### CAUTION!

1. Never reach into drum while it is rotating.
2. Stop engine or motor before cleaning or servicing.
3. Keep children and unauthorized people away from machine.
4. Never allow machine to run unattended.
5. Read owner's manual before operating or servicing this machine.

### GENERAL PURPOSE CONCRETE

#### Proportions by Volume:

- 1 part cement
- 2 1/2 parts sand
- 3 parts aggregate
- 2/3 parts water

With drum rotating, add water, aggregate, cement and sand in that order. Mix will be "mushy" not "soupy" for average moisture sand. Add or delete water if sand is dry or wet.

### CLEANING

1. With drum rotating, add water and aggregate.
2. Allow drum to turn for several minutes.
3. Dump water and aggregate.
4. Stop mixer by disconnecting motor or stopping engine.
5. Thoroughly clean with water before cement hardens.

### LUBRICATION & SERVICE

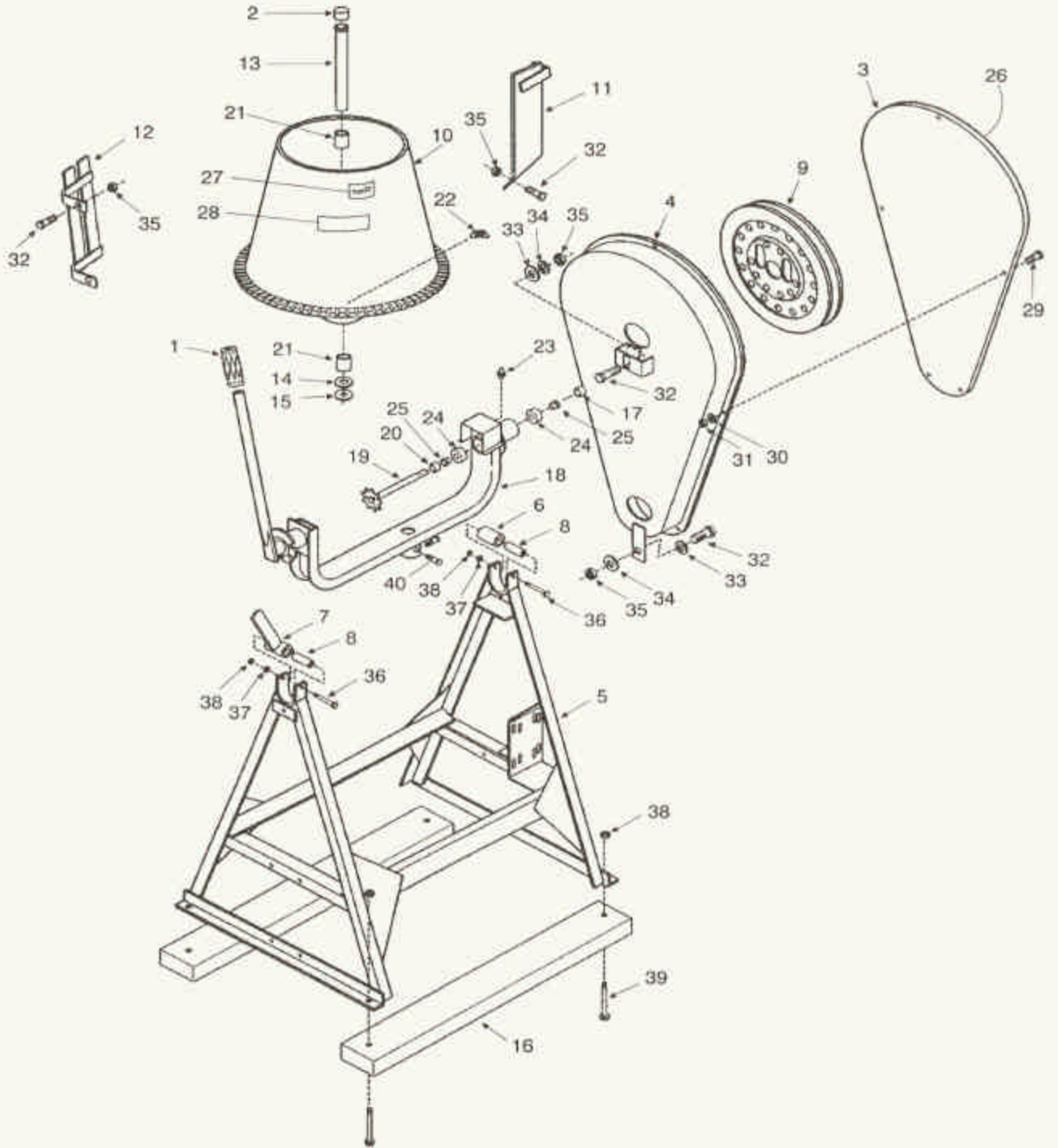
1. Lubricate pinion shaft and drum shaft daily when in use.
2. Service engine or motor per manual supplied.

#5706: Decal, Gilson Name Plate



#38257: Decal, Drum Rotation

# 59012A



Concrete Mixers Parts List

| Item No. | Part No.  | Description                                   | Qty |
|----------|-----------|---|-----|
| 1        | 1183      | Grip  | 1   |
| 2        | 19866     | Bearing Cap                                   | 1   |
| 3        | 214858    | Shroud Cover                                  | 1   |
| 4        | 214907    | Shroud Assembly                               | 1   |
| 5        | 245948    | Frame Assembly                                | 1   |
| 6        | 245977    | Yoke Lock Tube                                | 1   |
| 7        | 245978    | Yoke Lock Assembly                            | 1   |
| 8        | 245980    | Pivot Tube                                    | 2   |
| 9        | 29209     | Pulley Assembly                               | 1   |
| 10       | 38078     | Drum Assembly (includes items #21 & #22)      | 1   |
| 11       | 38081     | Paddle Assembly                               | 2   |
| 12       | 38084     | Blade Assembly                                | 2   |
| 13       | 38087     | Drum Shaft Assembly                           | 1   |
| 14       | 5450      | Drum Shaft Spacer (light, use as required)    | 2   |
| 15       | 5452      | Drum Shaft Spacer (heavy, use as required)    | 2   |
| 16       | 5523      | Wood Skid                                     | 2   |
| 17       | 760-40043 | Pulley Spacer                                 | 1   |
| 18       | 762-40063 | Yoke Assembly (includes items #23, #24 & #25) | 1   |
| 19       | 762-40070 | Drive Shaft Assembly                          | 1   |
| 20       | 762-40071 | Gear Spacer                                   | 1   |
| 21       | 5269      | Drum Shaft Bushing (included with item #10)   | 2   |
| 22       | 5904      | Grease Fitting (included with item #10)       | 1   |
| 23       | 1102      | Grease Fitting (included with item #18)       | 1   |
| 24       | 245956    | Bushing (included with item #18)              | 2   |
| 25       | 4959      | Flange Bushing (included with item #18)       | 2   |
| 26       | 217728    | Decal, Safety Instructions                    | 1   |
| 27       | 38257     | Decal, Rotation                               | 1   |
| 28       | 5706      | Decal, Gilson                                 | 1   |
| 29       | 70090*    | 1/4-20 x 1/2 Hex Head Cap Screw               | 5   |
| 30       | 70643*    | 1/4 Lock Washer                               | 5   |
| 31       | 70545*    | 1/4-20 Hex Nut                                | 5   |
| 32       | 70151*    | 5/16-18 x 1 Hex Head Cap Screw                | 10  |
| 33       | 70701*    | 5/16 Flat Washer                              | 2   |
| 34       | 70646*    | 5/16 Lock Washer                              | 2   |
| 35       | 70549*    | 5/16-18 Hex Nut                               | 10  |
| 36       | 70272*    | 3/8-16 x 3 1/4 Hex Head Cap Screw             | 2   |
| 37       | 70649*    | 3/8 Lock Washer                               | 2   |
| 38       | 70553*    | 3/8-16 Hex Nut                                | 6   |
| 39       | 70456*    | 3/8-16 x 1 3/4 Carriage Bolt                  | 4   |
| 40       | 70506*    | 3/8-16 x 1/2 Socket Head Set Screw            | 2   |

\*Common Hardware may be purchased locally

## MIXERS ONE-YEAR WARRANTY

This product is warranted to the original purchaser only, to be free of defects in material and workmanship under normal use, for one year from purchase date. Cleform Tool Corp. shall without charge for parts and labor, repair or replace such parts that are found to be defective. All transportation charges for replacement parts must be borne by the purchaser.

For warranty service, the product must be delivered, with proof of purchase date, to the dealer of original purchase, or any factory authorized service dealer. The delivery of the unit must be made no later than 30 days after the expiration of the warranty period.

If difficulty is encountered in having warranty work performed, contact the factory Service Department:

Exclusion from this warranty:

1. The following items are not covered under the CLEFORM TOOL CORP. One year Warranty and are warranted by their respective manufacturer.
  - a) Engines, including starters, generators, alternators and gear reducers.
  - b) Enclosed gear transmissions.(Note: A copy of the warranty and service contact information for the above items is furnished with the individual product).
2. All consequential damages, including pickup and delivery of the unit, communication, mileage charges and/or rental of a replacement unit during repairs are not covered under this warranty, nor is any loss of income and/or other loss resulting from the failure of the product to function due to a warranty defect.
3. This warranty will not apply when the product becomes inoperative due to misuse, normal wear, neglect, improper maintenance, accident or freight damage; has not been operated and maintained in accordance with the instructions furnished in the Operator's Manual; or has been altered or modified without approval from the factory Service Department.
4. No parts or products are to be returned to the factory without prior written approval from the factory.

ALL IMPLIED WARRANTIES, INCLUDING THOSE OF MERCHANTABILITY AND FITNESS FOR A PARTICULAR PURPOSE, ARE LIMITED TO ONE YEAR FROM DATE OF PURCHASE BY THE ORIGINAL RETAIL CUSTOMER AND TO THE EXTENT PERMITTED BY LAW ANY AND ALL IMPLIED WARRANTIES ARE EXCLUDED AND DISCLAIMED AFTER THE EXPIRATION OF SUCH PERIOD.

Some states do not allow limitations on how long an implied warranty lasts, or the exclusion or limitations of incidental or consequential damages, so the above limitations or exclusions may not apply to you.

This warranty gives you specific legal rights, and you may also have other rights, which vary from state to state.

### HOW TO OBTAIN PARTS AND SERVICE INFORMATION

For parts and service information, contact either your local dealer or the Cleform Tool Corp. factory:

CLEFORM TOOL CORP  
4343 EASTON RD.  
ST. JOSEPH, MO 64503  
800-253-3676 PHONE  
888-253-3676 FAX

### HOW TO ORDER PARTS

When ordering parts be sure to indicate the following information:

- **Name of each part**
- **Complete part number**
- **Quantity of each part**
- **Model Name** (Include all letters and numbers)
- **Serial Number** (Include all letters and numbers)

